

No matter the pest, Envu has the solution



No matter the pest, Envu has the solution

Ants



Recommended treatment:

- > Where possible, locate the nest and spray insecticide directly into nest entrances
- > When nest cannot be located, apply insecticide/bait to all ant trails and areas where ants are foraging, eg underneath materials

- > Treat the outside structure; walls, around doors, windows and other areas where ants may be located
- > Treat the soil, turf or other ground covering to the structure (in a band up to 3 metres wide) where ants are seen, have been found, or can find shelter

Recommended products: Temprid 75 or Suspend Flexx

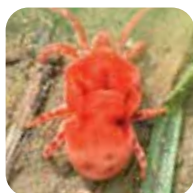
Bed bugs

Recommended treatment:

- > Apply insecticide to the bed frame and walls, crack and crevices and skirting boards in the vicinity of the bed
- > Do not treat the flat surfaces of the bed on which people sleep. However, apply insecticide to the edges and seams of the mattress (always follow label directions for these applications)
- > All treatments and recommendations carried out in accordance with AEPMA Bed Bug Code of Practice



Recommended products: Temprid 75 or Suspend Flexx



Bird mites

Recommended treatment:

- > Treat infested areas
- > For treatment of roof void areas, a suitably registered dust product such as Coopex Insecticidal Dusting Powder is recommended

- > Cover roof void, including areas where bird nests are evident. Remove nests and bird-proof voids to prevent recurrence
- > Treatment of infested areas with Suspend Flexx is also an option

Recommended products: Coopex Insecticidal Dusting Powder or Suspend Flexx

Carpet beetles

Recommended treatment:

- > Test a small, inconspicuous area of carpet and allow to dry first to ensure that application volumes are appropriate and that staining will not occur
- > Spray insecticide onto infested carpets particularly in areas of little or no traffic and underneath windows where adult beetles may be entering the building
- > Allow treated carpets to dry before resuming activity on them



Recommended products: Temprid 75 or Suspend Flexx

Clothes moths



Recommended treatment:

- > Spray surfaces in areas where clothes are stored
- > DO NOT spray the clothes themselves
- > Application to porous surfaces or through use of power equipment refer to product label for application rates

Recommended products: Temprid 75 or Suspend Flexx

Cockroaches

Recommended treatment:

- > Conduct a thorough inspection and apply insecticide to known and potential cockroach harbourages

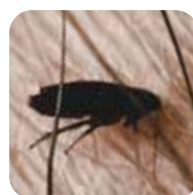
- > A barrier application around areas where cockroach infestations may be originating is also suggested

- > Where application of a spray insecticide is not suitable, it is recommended to use a registered gel such as Maxforce Gold Cockroach Gel or Maxforce Fusion Cockroach Gel. Apply as per the registered label of those products

- > Reassessment of treated areas one month after initial baiting is recommended to evaluate if additional baiting is required. Bait placements should be replenished when consumed or at least every three months as long as pest populations persist

Recommended products:

Insecticides – Temprid 75, Suspend Flexx, Starycide
Baits – Maxforce Activ, Maxforce Fusion, Maxforce Gold



Fleas

Recommended treatment:

- > For indoor areas, clean and vacuum infested areas and dispose of dust collected in the garbage in a sealed plastic bag. Lightly spray infested areas concentrating on areas under furniture etc

- > For outdoor areas, apply to outside surfaces of buildings and surrounds including but not limited to foundations, soil, turf, pet-housing and other areas where fleas may be present

- > For dry and hydrophobic soils, pre-wetting the soil with water and/or the addition of a soil wetting agent is recommended.

- > Treat pets with a suitably registered flea control product

- > Application to carpets: It is highly recommended that a small, inconspicuous area of carpet be sprayed and allowed to dry first to ensure that application volumes are appropriate and that staining will not occur. Carpets are considered porous surfaces, however excessive liquid application may produce water stains and therefore the non-porous surface rate should be adopted if possible. Apply product in accordance with the product label. Allow treated carpets to dry before resuming activity on them

Recommended products:

Temprid 75 with Starycide or Suspend Flexx with Starycide



Flies

Recommended treatment:

- > Spray surfaces where flies are known to come to rest
- > Include external surfaces that are exposed to the morning sun

> An application of insecticide should always be part of a comprehensive fly control program that focuses on fly resting and breeding sites

Note: The perception of the level of control of flying insects achieved within any given area treated with a residual surface spray will be affected by the extent of in-migration of individuals from external (untreated) areas. A residual surface spray will only control those insects that alight on the treated surfaces and therefore complete elimination of flying insects from the treated area should not necessarily always be expected.

> Aqua K-Othrine can be used as a space spray to control adult insects

Recommended products: Suspend Flexx or Aqua-K Othrine

Millipedes

Recommended treatment:

> Spray paths to a height of 1m on walls around buildings to prevent invasion

> Apply insecticide as a coarse spray to infested areas

> Temprid 75 is recommended for use on non-porous surfaces only

> Ficam W should be used at the higher rate for longer residual control or when heavy infestations occur or when conditions are unhygienic.

Recommended products: Temprid 75 or Ficam W



Mosquitoes

Recommended treatment:

> Spray surfaces where mosquitoes are known to come to rest

> Spray walls, awnings, fences and vegetated areas in proximity to buildings

Note: The perception of the level of control of flying insects achieved within any given area treated with a residual surface spray will be affected by the extent of in-migration of individuals from external (untreated) areas. A residual surface spray will only control those insects that alight on the treated surfaces and therefore complete elimination of flying insects from the treated area should not necessarily always be expected.

Recommended products: Aqua-K Othrine or Suspend Flexx with Starycide

Silverfish

Recommended treatment:

> Direct spray to areas of potential infestation e.g. under skirting boards and furniture where dark conditions may favour silverfish populations

> If spraying inside cupboards or storage areas remove clothing and utensils etc. before spraying

> The use of an Insect Growth Regulator (such as Starycide Insect Growth Regulator) is recommended

Recommended products: Temprid 75 with Starycide or Suspend Flexx with Starycide



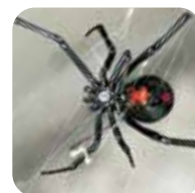
Spiders

Recommended treatment:

> Non-webbing: Spray areas where spiders are known to occur

> Web-spinning: Spray spiders, their webbing and areas where spiders may hide directly. It is recommended that webbing is left in place for a few days after application to optimise efficacy

Recommended products: Temprid 75 or Suspend Flexx



Stored product pests

Recommended treatment:

> The use of an insecticide in the control of stored product pests should be considered part of an integrated strategy to prevent development of insect populations

> Best results will be obtained where good hygiene is maintained

> Infested areas should be cleaned prior to application and regularly cleaned thereafter to reduce food sources for pests

> When treating for beetles, pay special attention to sheltered areas such as cracks and crevices, under furniture and equipment, floors, walls and shelves

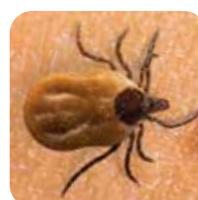
> Adult moths can be controlled by applying this product to walls and surfaces where the flying adult moths come to rest

> Ensure food items in store are not exposed to spray.

If necessary, remove food items from the area to be treated. Allow all treated surfaces to dry before replacing food items

> Where possible avoid spraying actual surfaces which food is likely to directly contact. DO NOT allow spray to contact food packaging material. Discard any foodstuff accidentally contaminated with spray solution

Recommended products: Aqua K-Othrine or Suspend Flexx or Temprid 75



Ticks

Recommended treatment:

> Apply to outside surfaces of buildings and surrounds including but not limited to foundations, soil, turf, trunks of woody ornamentals and other areas where ticks congregate or have been seen

> Treatment is intended to control ticks which are present at the time of application

> Treatment may need to be repeated during times of high tick activity

> When used in domestic garden situations where domestic pets are present, it is recommended that the animals are also treated with an appropriately registered ectoparasiticide

Recommended product: Suspend Flexx

Wasps

Recommended treatment:

> Apply product to the paper nest ensuring thorough and even coverage

> When all adult wasps have been knocked down the nest may be safely removed from the structure

Recommended products: Suspend Flexx or Coopex Insecticidal Dusting Powder



Aqua-K-Othrine® Space Spray

Aqua-K-Othrine kills mosquitoes, flies, cockroaches, spiders and stored product pests. Aqua-K-Othrine contains synthetic pyrethroid (2% deltamethrin) in a unique EW formulation. Primarily based on water with built-in FFAST anti-evaporant technology.

Active Ingredients: 20g/L Deltamethrin,
250g/L Hydrocarbon Liquid

Pack Size: 1L

Coopex® Dusting Powder

Coopex Dusting Powder is a ready-to-use broad spectrum insecticide with a unique formulation. It controls a wide range of insect pests in a wide range of situations including cockroaches, silverfish, ants, fleas, carpet beetles, bedbugs, spiders, bird mites, hide beetles, European wasps, Potato moth and subterranean termites in trees and stumps.

Active Ingredient: 10g/kg Permethrin 25:75

Pack Size: 10kg

Coopex® Residual Insecticide

Coopex Residual Insecticide is a wettable powder that creates a residual surface spray, for the control of general insect pests. Controls a wide range of insect pests both indoors and outside. Sustained residual activity providing up to 4 month's protection.

Active Ingredient: 250g/kg Permethrin 25:75

Pack Size: 20 x 25g

Ficam® W

Ficam W Insecticide is a residual broad spectrum spray for control of a wide range of insect pests in domestic, industrial, commercial and public service buildings.

Active Ingredient: 800g/kg Bendiocarb

Pack Size: 150g

Maxforce® Activ

Envu has created this product from the ground up. Trials show that gel placements remain palatable for at least 12 months. Incorporating the patented blue bead feeding stimulant technology to ensure Total Life Cycle control (TLC). Maxforce Activ is recommended for maintenance jobs.

Active Ingredient: 10g/kg Clothianidin

Pack Size: 3 x 30g with plunger

Maxforce® Fusion

Maxforce Fusion is the next generation gel against cockroaches large and small. Maxforce Fusion will kill cockroaches including nymphs, for Total Life Cycle control (TLC).

Active Ingredient: 21.5g/kg Imidacloprid

Pack Size: 30g

Maxforce® Gold

Maxforce Gold is from the first generation of gels where our formulation scientists and biologists tailor-made a bait matrix specifically to cater for a balanced range of cockroach dietary preferences. Maxforce Gold is recommended for clean-out jobs.

Active Ingredient: 0.3g/kg Fipronil

Pack Size: 35g

Maxforce® Quantum

Maxforce Quantum is a viscous liquid ant bait made of 99.9% naturally derived ingredients.

For the control of ants in and around the home.

Active Ingredient: 0.3g/L Imidacloprid

Pack Size: 120g



Starycide®

Starycide Insect Growth Regulator for the control of silverfish, immature fleas and cockroaches in indoor and outdoor situations; and for the control of mosquitoes.

Active Ingredient: 48g/L Triflururon

Pack Size: 1L

Suspend® Flexx

Suspend Flexx is an innovative general insecticide from Envu containing leading-edge patented Partix Formulation Technology. Scientifically-proven to maximise the active ingredient, this world-first technology allows the active (Deltamethrin) to be more readily available on surfaces and enhances the efficacy and residual effectiveness.

Active Ingredient: 25g/L Deltamethrin

Pack Size: 3L

Temprid® 75

Temprid 75 is a general insecticide that will control most insect pests; combining two powerful and effective residual insecticides: Beta-cyfluthrin and Imidacloprid to deliver greater control.

Active Ingredients: 25g/L Beta-cyfluthrin,
50g/L Imidacloprid

Pack Size: 1L & 5L

